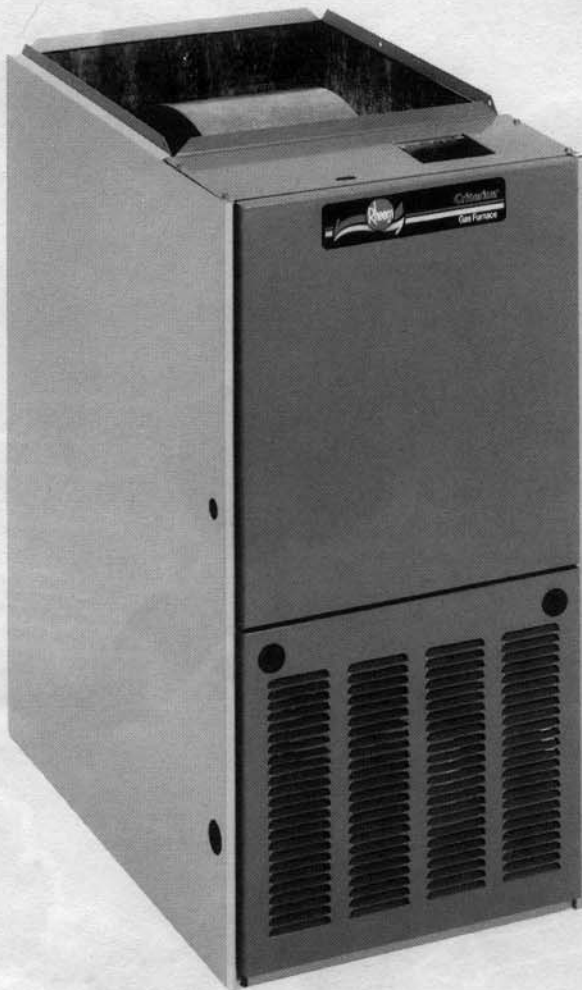


# GAS FURNACES



## CRITERION® 78%-80% A.F.U.E.† DOWNFLOW/ HORIZONTAL GAS FURNACES

The Rheem® Criterion® line of downflow/horizontal\*\*\* gas furnaces is designed for installation in closets, alcoves, utility rooms, or attics. The design is certified by the American Gas Association. Canadian models are certified by the Canadian Gas Association.

### Features

- Patented Turbulex® heat exchanger, constructed of both stainless and aluminized steel for the maximum in corrosion resistance.
- Low profile "34 inch" design is lighter and easier to handle, and leaves room for optional equipment.
- Both standing pilot (counterflow only) and hot surface ignition models available.
- Left or right side gas and electric inlet connections with quick, simple change.
- Hot surface ignition models feature an integrated board with humidifier and electronic air cleaner hookups. An accessory kit is available for standing pilot models.
- Insulated blower compartment, a slow-open gas valve and a specially designed draft inducer motor make it one of the quietest furnaces on the market today.
- Downflow/Horizontal series allows this furnace to be installed in either downflow or horizontal configurations.\*\*\*
- Hot surface ignition models may be laid on either side for horizontal installations. (No field converting required.)
- Integrated solid state control board.
- Pre-paint galvanized steel cabinet.
- Molded permanent filter.
- Grab-holes in doors to aid in easy door removal and replacement.

A variety of cooling coils and plenums designed to use with Rheem Criterion gas furnaces are available as optional accessories for air conditioning models.

†A.F.U.E. (Annual Fuel Utilization Efficiency) calculated in accordance with Department of Energy test procedures.

\*\*\*Horizontal applications require hot surface ignition models.

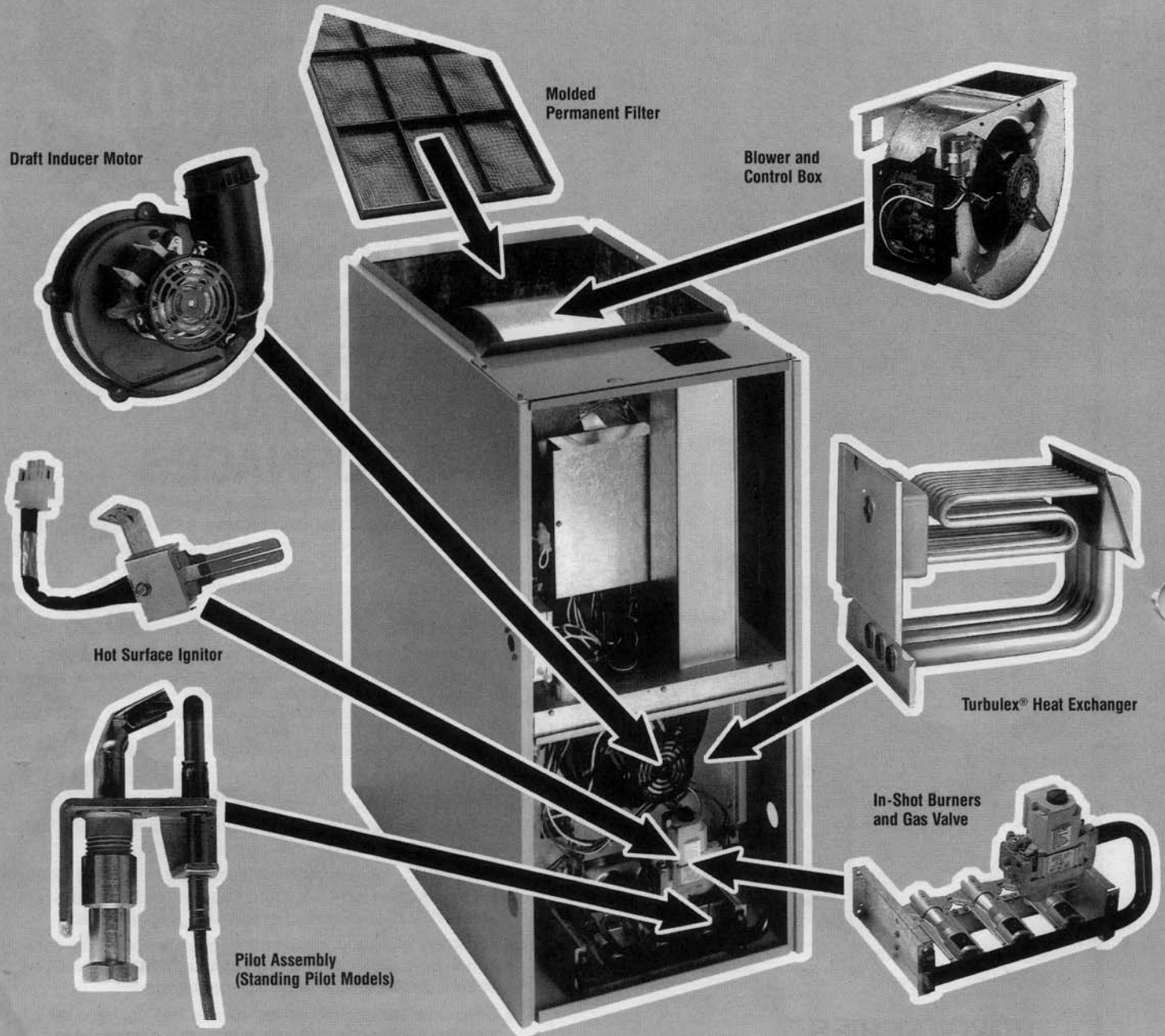
### RGLG- SERIES

Models with Input Rates from  
50,000 to 150,000 BTU/HR  
(U.S. & Canadian Models)





# RHEEM CRITERION 78-80% DOWNFLOW/HORIZONTAL GAS FURNACES



## STANDARD EQUIPMENT

Completely assembled and wired; induced draft; pressure switch; redundant main gas control; blower compartment door safety switch; solid state time on/time off blower control; limit control; manual shut-off valve, pressure regulator for natural and L.P. (propane) gas; transformer; direct drive multi-speed blower motor. Furnaces are equipped with cooling/heating relay and transformer (40VA) ready for air conditioning applications. (Please note: a thermostat is not included as standard equipment.)

NOTE: Furnace is not listed for use with fuels other than natural or L.P. (propane) gas.

The complete terms of limited and other warranties are available at our sales office, or through local installer.

All models can be converted by a qualified Rheem distributor or local service dealer to use L.P. (propane) gas without changing burners. Factory approved kits must be used to convert from natural to L.P. (propane) gas and may be ordered as optional accessories from a Rheem parts distributor.

For L.P. (propane) operation, refer to Conversion Kit Index Form No. 92-21519-30 for U.S. models and Form No. 92-21519-31 for Canadian models.

NOTE: For natural and L.P. (propane) gas models, standard hot surface ignition is 100% lockout type.

**WARNING**  
THIS FURNACE IS NOT APPROVED  
OR RECOMMENDED  
FOR USE IN MOBILE HOMES

**BEFORE PURCHASING THIS APPLIANCE, READ IMPORTANT ENERGY COST AND EFFICIENCY INFORMATION AVAILABLE FROM YOUR RETAILER.**

## PHYSICAL DATA AND SPECIFICATIONS—(DOWNFLOW/HORIZONTAL) U.S. MODELS

MODEL NUMBERS	RGLG-050AUER RGLG-05MAUER RGLG-05EAUER RGLG-05NAUER	RGLG-075AUER RGLG-07MAUER RGLG-07EAUER RGLG-07NAUER	RGLG-075AMGR RGLG-07MAMGR RGLG-07EAMGR RGLG-07NAMGR	RGLG-100AUER RGLG-10MAUER RGLG-10EAMER RGLG-10NAMER	RGLG-100BRJR RGLG-10MBRJR RGLG-10EBRJR RGLG-10NBRJR	RGLG-125ARJR RGLG-12MARJR RGLG-12EARJR RGLG-12NARJR	RGLG-150ARJR RGLG-15MARJR RGLG-15EARJR RGLG-15NARJR
INPUT-BTU/HR ②	50,000	75,000	75,000	100,000	100,000	125,000	150,000
HEATING CAPACITY BTU/HR	41,000	59,500	60,500	80,000	81,000	99,000	119,500
HEAT EXT. STATIC PRESSURE	.10	.12	.12	.15	.15	.20	.20
BLOWER (D x W)	11 x 6	11 x 6	11 x 7	11 x 6 = RGLG-10*AU 11 x 7 = RGLG-10*AM	11 x 10	11 x 10	11 x 10
MOTOR H.P./SPEEDS/TYPE	1/2-4-PSC	1/2-3-PSC	3/4-4-PSC	1/2-3-PSC	3/4-4-PSC	3/4-4-PSC	3/4-4-PSC
MOTOR FULL LOAD AMPS	6.8	6.8	9.5	6.8	9.5	9.5	9.5
HEATING SPEED	MED-LOW	MED	MED-LOW	MED	MED-LOW	MED-LOW	MED-LOW
COOLING SPEED	HIGH	HIGH	HIGH	HIGH	HIGH	HIGH	HIGH
COOLING CFM @ .5" E.S.P. (NOMINAL)	1200	1200	1600	1200	2000	2000	2000
MAX. EXT. STATIC PRESSURE (IN.)	.50	.50	.50	.50	.50	.50	.50
TEMPERATURE RISE RANGE °F	25-55	40-70	25-55	55-85 = RGLG-10*AU 45-75 = RGLG-10*AM	40-70	40-70	50-80
STANDARD FILTER	(1) 14 x 20	(2) 12 x 20	(2) 12 x 20	(2) 12 x 20	(2) 14 x 20	(2) 14 x 20	(2) 14 x 20
APPROX. SHIPPING WEIGHT (LBS.)	85	105	105	115	120	140	150
AFUE-STANDING PILOT MODELS ①	79.3%	78.6%	78.9%	78%	78%	78.1%	78.5%
AFUE-H.S.I. MODELS ①	82.2%	80.5%	80.8%	80.2%	80%	80%	80%
CALIFORNIA SEASONAL EFFICIENCY- H.S.I./NO <sub>x</sub> MODELS	75.9/76.2	74.4/74.9	75.1/75.5	75.2/75.2	74.7/74.7	75.2/75.3	76.0/75.9

NOTES: All models are 115V, 60HZ, 1Ø. Gas connection size for all models is 1/2" N.P.T.

① In accordance with D.O.E. test procedures.

② See Conversion Kit Index Form No. 92-21519-30 for high altitude derate.

## PHYSICAL DATA AND SPECIFICATIONS—(DOWNFLOW/HORIZONTAL) CANADIAN MODELS

MODEL NUMBERS	RGLG-050AUEA RGLG-05EAUEA	RGLG-075AUEA RGLG-07EAUEA	RGLG-075AMGA RGLG-07EAMGA	RGLG-100AUEA RGLG-10EAMEA	RGLG-100BRJA RGLG-10EBRJA	RGLG-125ARJA RGLG-12EARJA	RGLG-150ARJA RGLG-15EARJA
INPUT-BTU/HR ②	50,000	75,000	75,000	100,000	100,000	125,000	150,000
HEATING CAPACITY BTU/HR	41,000	59,500	60,500	80,000	81,000	99,000	119,500
HIGH ALTITUDE INPUT	45,000	67,500	67,500	90,000	90,000	112,500	135,000
HIGH ALTITUDE OUTPUT CAPACITY	36,500	53,500	54,000	72,000	72,500	89,000	107,500
HEAT EXT. STATIC PRESSURE	.10	.12	.12	.15	.15	.20	.20
BLOWER (D x W)	11 x 6	11 x 6	11 x 7	11 x 6 = RGLG-10*AU 11 x 7 = RGLG-10*AM	11 x 10	11 x 10	11 x 10
MOTOR H.P./SPEEDS/TYPE	1/2-4-PSC	1/2-3-PSC	3/4-4-PSC	1/2-3-PSC	3/4-4-PSC	3/4-4-PSC	3/4-4-PSC
MOTOR FULL LOAD AMPS	6.8	6.8	9.5	6.8	9.5	9.5	9.5
HEATING SPEED	MED-LOW	MED	MED-LOW	MED	MED-LOW	MED-LOW	MED-LOW
COOLING SPEED	HIGH	HIGH	HIGH	HIGH	HIGH	HIGH	HIGH
COOLING CFM @ .5" E.S.P. (NOMINAL)	1200	1200	1600	1200	2000	2000	2000
MAX. EXT. STATIC PRESSURE (IN.)	.50	.50	.50	.50	.50	.50	.50
TEMPERATURE RISE RANGE °F	25-55	40-70	25-55	55-85 = RGLG-10*AU 45-75 = RGLG-10*AM	40-70	40-70	50-80
STANDARD FILTER	(1) 14 x 20	(2) 12 x 20	(2) 12 x 20	(2) 12 x 20	(2) 14 x 20	(2) 14 x 20	(2) 14 x 20
APPROX. SHIPPING WEIGHT (LBS.)	85	105	105	115	120	140	150
AFUE-STANDING PILOT MODELS ①	79.3%	78.6%	78.9%	78%	78%	78.1%	78.5%
AFUE-H.S.I. MODELS ①	82.2%	80.5%	80.8%	80.2%	80%	80%	80%

NOTES: All models are 115V, 60HZ, 1Ø. Gas connection size for all models is 1/2" N.P.T.

① In accordance with D.O.E. test procedures.

② See Conversion Kit Index Form No. 92-21519-31 for high altitude derate.

### GENERAL TERMS OF LIMITED WARRANTY\*

Rheem will furnish a replacement for any part of this product which fails in normal use and service within the applicable period stated, in accordance with the terms of the limited warranty.

Gas Heat Exchanger Warranty . . . . . Twenty (20) Years  
Draft Inducer Warranty . . . . . Five (5) Years

Integrated Blower Control Board Warranty . . . . . Five (5) Years  
(Standing Pilot and Hot Surface Control Boards)  
Any Other Part . . . . . One (1) Year

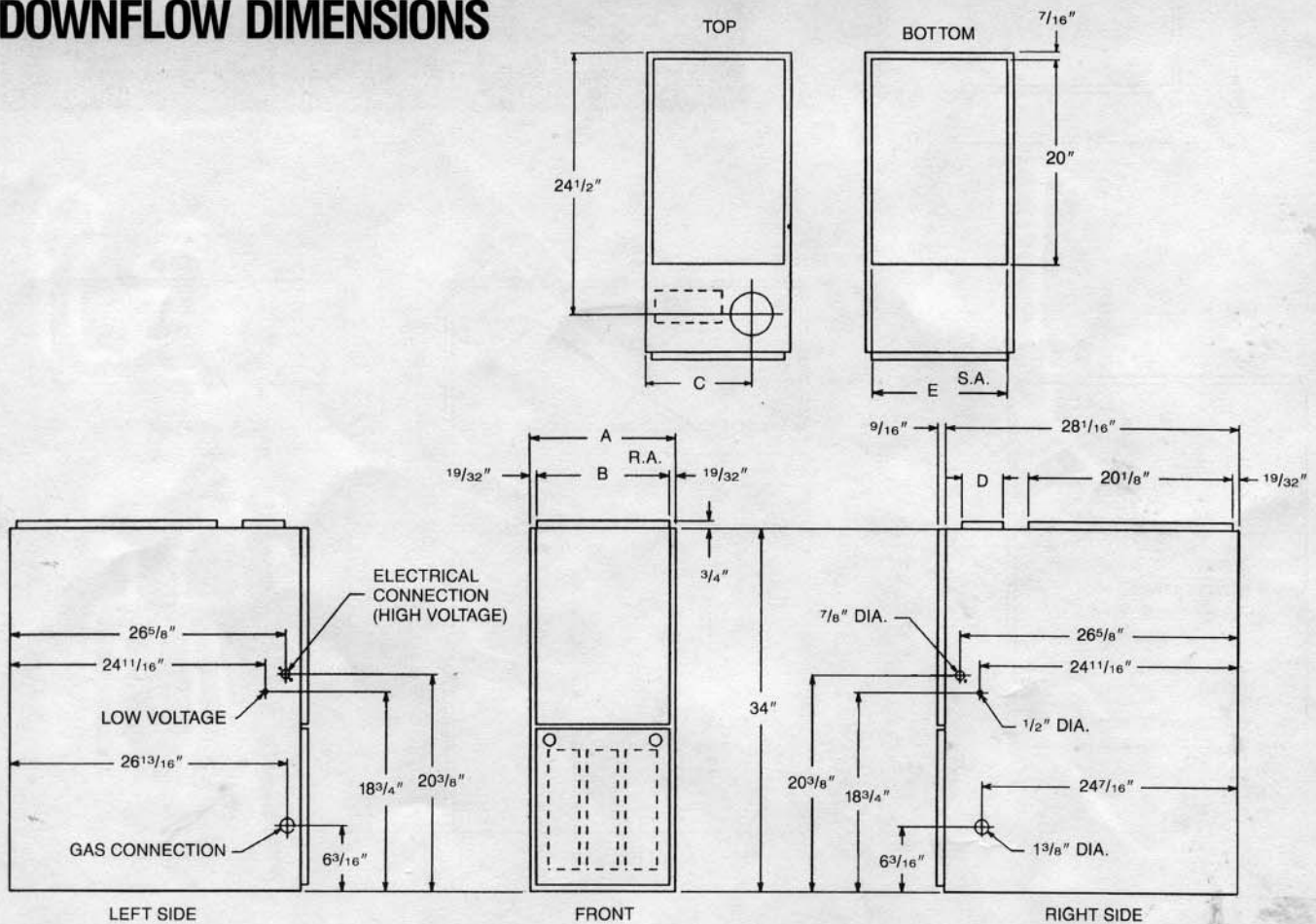
\*For Complete Details of the Limited Warranty, Including Applicable Terms and Conditions, See Your Local Installer or Contact the Factory for a Copy.

# MODEL IDENTIFICATION—DOWNFLOW/HORIZONTAL MODELS

R	G	L	G	—	07E	A	U	E	R
Rheem	Gas	Downflow	Design		Heating Input Designation	Variations	Blower	Heating & Cooling	Fuel Type
Furnace	Furnace		Series		Standing Pilot	A = Std. Cabinet	Designation	Designation	R = Natural Gas, U.S. Standard Furnace
					NO <sub>x</sub> Model	B = Wide Cabinet	U = 11 x 6	E = 1100-1330 CFM	A = Natural Gas, Canadian Standard Furnace
					Hot Surface Ignition		M = 11 x 7	G = 1450-1750 CFM	
					NO <sub>x</sub> Model		R = 11 x 10	J = 1800-2075 CFM	
					Input BTU/HR				
					050 05M				
					075 07M				
					100 10M				
					125 12M				
					150 15M				

**WARNING: ALL MODELS TO BE USED IN HORIZONTAL APPLICATIONS MUST BE HOT SURFACE IGNITION MODELS.**

## DOWNFLOW DIMENSIONS



**TABLE 1. DIMENSIONS AND CLEARANCE TO COMBUSTIBLE MATERIAL (INCHES)**

MODEL	A	B	C	D	E	REDUCED CLEARANCES (IN.)					
						LEFT SIDE	RIGHT SIDE	BACK	TOP	FRONT	VENT
RGLG-05	14	12 <sup>27/32</sup>	10 <sup>3/8</sup>	(A)	13 <sup>1/8</sup>	0	4 <sup>(B)</sup>	0	1	6	6 <sup>(C)</sup>
RGLG-07	17 1/2	16 <sup>11/32</sup>	12 <sup>1/8</sup>	(A)	16 <sup>5/8</sup>	0	3 <sup>(B)</sup>	0	1	6	6 <sup>(C)</sup>
RGLG-10(-)A	17 1/2	16 <sup>11/32</sup>	12 <sup>1/8</sup>	(A)	16 <sup>5/8</sup>	0	3 <sup>(B)</sup>	0	1	6	6 <sup>(C)</sup>
RGLG-10(-)B	21	19 <sup>27/32</sup>	13 <sup>7/8</sup>	(A)	20 <sup>1/8</sup>	0	0	0	1	6	6 <sup>(C)</sup>
RGLG-12	24 1/2	23 <sup>11/32</sup>	15 <sup>5/8</sup>	(A)	23 <sup>5/8</sup>	0	0	0	1	6	6 <sup>(C)</sup>
RGLG-15	24 1/2	23 <sup>11/32</sup>	15 <sup>5/8</sup>	(A)	23 <sup>5/8</sup>	0	0	0	1	6	6 <sup>(C)</sup>

NOTES: (A) Vent connection as shipped from the factory is 3". Certain installations may require a 3" to 4" or 3" to 5" adaptor.

(B) May be 0" with type "B-1" vent.

(C) May be 1" with type "B-1" vent.

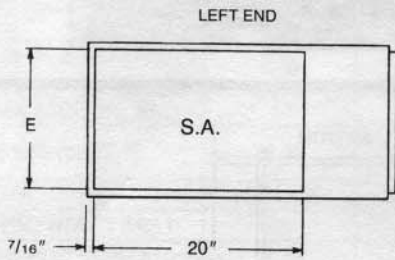
Furnaces must be vented in accordance with AGA/GAMA rating guidelines included with each furnace, and in accordance with local codes.

# HORIZONTAL DIMENSIONS

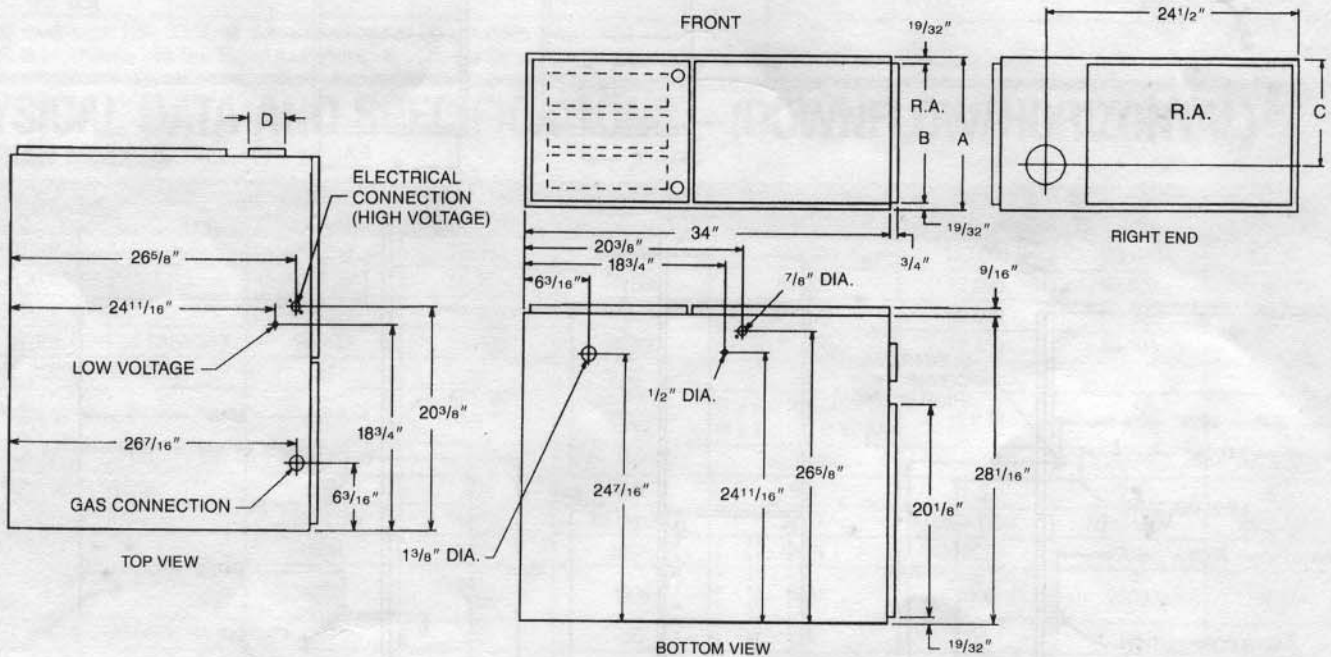
TABLE 1. DIMENSIONS AND CLEARANCE TO COMBUSTIBLE MATERIAL (INCHES)

MODEL	A	B	C	D	E	REDUCED CLEARANCES (IN.)					
						SIDES	BOTTOM	BACK	TOP	FRONT	VENT
RGLG-05	14	12 <sup>27/32</sup>	10 <sup>3/8</sup>	Ⓐ	13 <sup>1/8</sup>	1	0	0	2	6	6Ⓑ
RGLG-07	17 <sup>1/2</sup>	16 <sup>11/32</sup>	12 <sup>1/8</sup>	Ⓐ	16 <sup>5/8</sup>	1	0	0	2	6	6Ⓑ
RGLG-10(-)A	17 <sup>1/2</sup>	16 <sup>11/32</sup>	12 <sup>1/8</sup>	Ⓐ	16 <sup>5/8</sup>	1	0	0	2	6	6Ⓑ
RGLG-10(-)B	21	19 <sup>27/32</sup>	13 <sup>7/8</sup>	Ⓐ	20 <sup>1/8</sup>	1	0	0	2	6	6Ⓑ
RGLG-12	24 <sup>1/2</sup>	23 <sup>11/32</sup>	15 <sup>5/8</sup>	Ⓐ	23 <sup>5/8</sup>	1	0	0	2	6	6Ⓑ
RGLG-15	24 <sup>1/2</sup>	23 <sup>11/32</sup>	15 <sup>5/8</sup>	Ⓐ	23 <sup>5/8</sup>	1	0	0	2	6	6Ⓑ

NOTES: Ⓐ Vent connection as shipped from the factory is 3". Certain installations may require a 3" to 4" or 3" to 5" adaptor.  
 Ⓑ May be 1" with type "B-1" vent.



**WARNING**  
 THIS FURNACE IS NOT APPROVED OR RECOMMENDED FOR HORIZONTAL APPLICATION OR INSTALLATION ON ITS BACK, WITH ACCESS DOORS FACING UPWARDS.



# BLOWER PERFORMANCE DATA—DOWNFLOW/HORIZONTAL MODELS

MODEL NUMBER	BLOWER SIZE	MOTOR H.P.	BLOWER SPEED	CFM AIR DELIVERY						
				EXTERNAL STATIC PRESSURE INCHES WATER COLUMN						
				.7	.6	.5	.4	.3	.2	.1
RGLG-050AUE*	11 x 6	1/2	LOW	575	605	635	680	695	715	735
RGLG-05MAUER			MED-LO	895	920	940	955	970	980	990
RGLG-05EAUE*			MED-HI	1060	1085	1105	1125	1150	1170	1190
RGLG-05NAUER			HIGH	1250	1290	1320	1350	1390	1440	—
RGLG-075AUE*	11 x 6	1/2	LOW	800	820	840	855	870	885	900
RGLG-07MAUER			MED	995	1020	1045	1060	1080	1095	1115
RGLG-07EAUE*			HIGH	1160	1200	1235	1265	1295	1320	1345
RGLG-07NAUER										
RGLG-075AMG*	11 x 7	3/4	LOW	985	1010	1025	1035	1040	1045	1050
RGLG-07MAMGR			MED-LO	1105	1135	1155	1170	1185	1195	1205
RGLG-07EAMG*			MED-HI	1385	1425	1450	1480	1510	1535	1565
RGLG-07NAMGR			HIGH	1475	1525	1585	1640	1690	1740	—
RGLG-100AUE*	11 x 6	1/2	LOW	770	795	810	830	845	860	875
RGLG-10MAUER	11 x 6		MED	920	945	970	990	1010	1030	1050
RGLG-10EAME*	11 x 7		HIGH	1120	1120	1155	1190	1220	1250	1280
RGLG-10NAMER	11 x 7									
RGLG-100BRJ*	11 x 10	3/4	LOW	1095	1110	1120	1125	1130	1135	1140
RGLG-10MBRJR			MED-LO	1265	1285	1300	1310	1315	1320	1325
RGLG-10EBRJ*			MED-HI	1615	1655	1680	1705	1725	1735	1745
RGLG-10NBRJR			HIGH	1865	1935	2010	2080	2145	2200	—
RGLG-125ARJ*	11 x 10	3/4	LOW	1130	1140	1150	1160	1170	1175	—
RGLG-12MARJR			MED-LO	1300	1315	1330	1340	1350	1355	1360
RGLG-12EARJ*			MED-HI	1665	1710	1740	1760	1775	1780	—
RGLG-12NARJR			HIGH	1895	1975	2050	2120	2195	2285	—
RGLG-150ARJ*	11 x 10	3/4	LOW	1150	1170	1175	1180	1185	1190	1195
RGLG-15MARJR			MED-LO	1300	1330	1345	1360	1365	1375	1385
RGLG-15EARJ*			MED-HI	1655	1695	1735	1775	1800	1830	1845
RGLG-15NARJR			HIGH	1775	1847	1915	1980	2045	2110	—

NOTES: \*Designates "R" for U.S. models, and "A" for Canadian models.

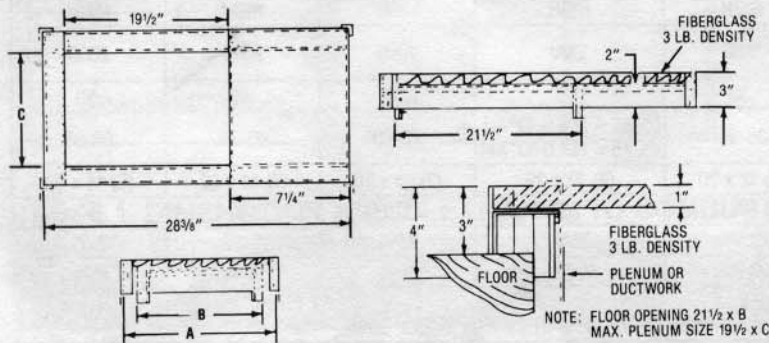
Must use H.S.I. model for horizontal applications.

## ACCESSORIES—DOWNFLOW/HORIZONTAL

**DOWNFLOW WARNING:** Unit design is certified for installation on non-combustible floor. A special factory supplied combustible floor sub-base is required when installing on a combustible floor. Failure to install the sub-base may result in fire, property damage and personal injury.

### COMBUSTIBLE FLOOR BASE DIMENSIONS

COMBUSTIBLE FLOOR BASE	USE WITH FURNACE SIZES	A	B	C
RXGC-B14	RGLG-05	14 <sup>1</sup> / <sub>2</sub>	13 <sup>1</sup> / <sub>4</sub>	11 <sup>1</sup> / <sub>4</sub>
RXGC-B17	RGLG-07, RGLG-10(-)A	18	16 <sup>3</sup> / <sub>4</sub>	14 <sup>3</sup> / <sub>4</sub>
RXGC-B21	RGLG-10(-)B	21 <sup>1</sup> / <sub>2</sub>	20 <sup>1</sup> / <sub>4</sub>	18 <sup>1</sup> / <sub>4</sub>
RXGC-B24	RGLG-12, RGLG-15	25	23 <sup>3</sup> / <sub>4</sub>	21 <sup>3</sup> / <sub>4</sub>



### PLENUM DATA

Plenum adapters are required in some instances for use on downflow applications when plenum and furnace size do not match.

FURNACE WIDTH	PLENUM WIDTH	PLENUM ADAPTER DOWNFLOW	COIL PLENUM
14	16 <sup>1</sup> / <sub>4</sub>	RXAA-C178	RXAL-B16BU
14	20 <sup>1</sup> / <sub>4</sub>	RXAA-C179	RXAL-B20BU
17 <sup>1</sup> / <sub>2</sub>	16 <sup>1</sup> / <sub>4</sub>	RXAA-C185	RXAL-B16BU
17 <sup>1</sup> / <sub>2</sub>	20 <sup>1</sup> / <sub>4</sub>	RXAA-C180	RXAL-B20BU
17 <sup>1</sup> / <sub>2</sub>	21 <sup>5</sup> / <sub>8</sub>	RXAA-C189	RXAL-B21BU
17 <sup>1</sup> / <sub>2</sub>	25 <sup>1</sup> / <sub>4</sub>	RXAA-C181	RXAL-B25BU
21	22 <sup>1</sup> / <sub>4</sub>	RXAA-C182	RXAL-B22BU
21	25 <sup>1</sup> / <sub>4</sub>	RXAA-C183	RXAL-B25BU
24 <sup>1</sup> / <sub>2</sub>	25 <sup>1</sup> / <sub>4</sub>	RXAA-C184	RXAL-B25BU
24 <sup>1</sup> / <sub>2</sub>	21 <sup>5</sup> / <sub>8</sub>	RXAA-C190	RXAL-B21BU

### RXGW-AAA01

Humidifier and Electronic Air Cleaner Accessory Board for Robertshaw Control RBC1 and Honeywell ST9101A 1014 Blower Controls.

NOTE: Available for standing pilot models only.

### RXPF-E01

FOSSIL FUEL KIT—is for use with Rheem Heat Pumps and Criterion warm air furnaces.

Before proceeding with installation, refer to installation instructions packaged with each model, as well as complying with all Federal, State, and Local codes, regulations, and practices.

**RHEEM  
AIR CONDITIONING  
DIVISION**

P.O. Box 17010, Fort Smith, Arkansas 72917-7010



"In keeping with its policy of continuous progress and product improvement, Rheem reserves the right to make changes without notice."